



*Interested Person may  
please inform their  
willingness through controlling  
officer to HRD Cell through  
email - [pudhrd@gmail.com](mailto:pudhrd@gmail.com)  
on or before 25/1/18*

## Government Engineering College

സർക്കാർ എഞ്ചിനീയറിംഗ് കോളേജ്

Barton Hill, Thiruvananthapuram 695 035

ബാർട്ടൺഹിൽ, തിരുവനന്തപുരം 695 035

Kerala State, India

കേരള സംസ്ഥാനം, ഇന്ത്യ

10-01-2018

Dear Sir,

The Translational research & Professional Leadership Centre, TPLC is organising a four day training programme for professionals, faculty and research scholars offered by TPLC

**Mastering Projects with Geospatial Analysis** from January 30 to February 2, 2018.

Systematic planning and management of any project requires basic literacy in open source tools and softwares in geo-spatial analysis. The current trend in modern technology is the adoption of a geographic information system (GIS) in project management, to enhance the acquisition, transformation and analysis of geographic data.

Another significant contribution with GIS tools is the repetitive use of the spatial and non-spatial data. The data file is flexible for updating for future requirements. A project manager must know the diverse applications of the GIS technology and how to manage projects with GIS tools making use of satellite data.

The Translational research & Professional Leadership Centre (TPLC), GEC Barton Hill is organizing this training programme with an objective to empower the professional in various field and the faculty from academic organizations particularly to manage projects with GIS tools. The programme is offered from **30 January to 2 February, 2018** and maximum participation of professionals, faculties and research scholars is ensured. The brochure is attached herewith.

CE  
R & B AND ADMN

Kindly sponsor and facilitate participation of maximum number of promising employees from your Institution.

Yours faithfully

DE  
12/1



Principal

### **the Training/ Course**

In this developing era of technological advancement, an engineer should be equipped with modern tools of geospatial analysis which strengthens and streamlines the design, planning and operation activities of any project. Satellite data coupled with GIS tools provide attractive options for problem solving and decision making in geospatial analysis. The geographic information system (GIS) enables us to capture, store, visualize, manipulate, analyze, interpret, and present all types of geographical data. The use of GIS provides support to planning and operation management while establishing a GIS infrastructure that can be expanded to other advanced application areas. The objective of this training course is to empower the professionals from various organizations and faculties from academic institutions to efficiently manage projects based on GIS. The training aims to facilitate the development of a GIS project which is flexible for future modifications as per the requirements of different users.

### **Course Objectives**

- Efficiently manage field assignments and monitor field data collection in real time.
- Acquire skills in managing GIS, GPS and Remote Sensing applications
- Create a navigation map that includes complete information on a campus.
- Create and configure a web map for map-based data collection and surveys.

### **Learning outcomes:**

On completion of this training course, the participant will be able

- To conceptualize a project geospatially
- To equip himself with the essentials of GIS, GPS and Remote sensing
- To apply QGIS to manage related projects in their Organizations.
- To develop a GIS map which can be modified for future requirements and to develop new application ideas.
- To export GIS outputs to other application platforms

### **Course Contents**

Approaching projects - the Geospatial way  
Understanding the QGIS platform  
GPS Basics and GPS Survey  
Remote Sensing Basics and Satellite Data  
Maps and Map Projections  
GIS Data types  
Geospatial Analysis  
Create a new project from scratch  
Practical GPS Survey  
Satellite Data Collection  
Create a GIS map and its interpretation  
Exporting GIS output to other platforms

### **Resource Persons**

Experts and Professionals with proven experience in handling GIS projects.

### **Who can apply?**

Professionals, Faculty and Research Scholars who are interested in managing new projects in GIS are cordially invited.

### **Coordinators**

Dr. Sujia R, TPLC Mob: 9495058367  
Dr.Jany George, TPLC Mob: 9895733847

### **Registration Fee**

Professionals - Rs. 5000/-  
Faculty from Academic Institutions Rs. 3000/-  
Research Scholars- Rs. 2000/-

Payment can be made online through NEFT to TPLC Account or through DD in favour of Principal, GEC, BartonHill, payable at Trivandrum

### **Account Details**

Account Name: **TPLC**  
Account No: **67314066447**  
Bank: SBI Vikas Bhavan,  
Thiruvananthapuram  
IFSC: SBIN0070415

### **How to apply**

Completed registration form along with the DD/ Reference number and transaction ID of the online payment should be sent to The Co-ordinator, TPLC through mail not later than 20<sup>th</sup> January, 2018.

E-mail: [tplc.gecbh@gmail.com](mailto:tplc.gecbh@gmail.com)

Postal Address: The Co-ordinator, TPLC, Government Engineering College, BartonHill, Thiruvananthapuram-695035



## REGISTRATION FORM

(Completed form should reach  
by 20<sup>th</sup> January 2018)

Name .....

Qualification .....

Age .....

Designation .....

Institution .....

Address .....

.....

..... Pin: .....

Mobile: .....

Email: .....

Why are you motivated to  
attend this course?

.....

.....

.....

.....

.....

.....

.....

## Translational research and

professional Leadership Centre (TPLC) is a promising research centre, started in collaboration with technical University Delft, Netherlands & IITM, Chennai, which focus on promoting Programmes on bridging the gap between Research and Practice. The gap between Research and Practice in all areas of engineering is increasing at an alarming rate and it calls for urgent attention from our side. TPLC started functioning in the year 2013 with office at Government Engineering college Barton Hill, located at the centre of Trivandrum city. The major maiden Programmes of TPLC is the Interdisciplinary M.Tech programme in Translational Engineering, with special emphasis on Social Responsibility, aiming at moulding Engineers to step forward to become responsible engineers beneficial for the society as well as for the nation. The other programmes proposed are Training Programmes for practicing Engineers, faculties, research scholars and students, Motivational Programmes for M.Tech students, Community level Programmes etc

*For more information*

[www.tplc.gecbh.ac.in](http://www.tplc.gecbh.ac.in)

[www.gecbh.ac.in](http://www.gecbh.ac.in)

## MASTERING PROJECTS WITH GEOSPATIAL ANALYSIS

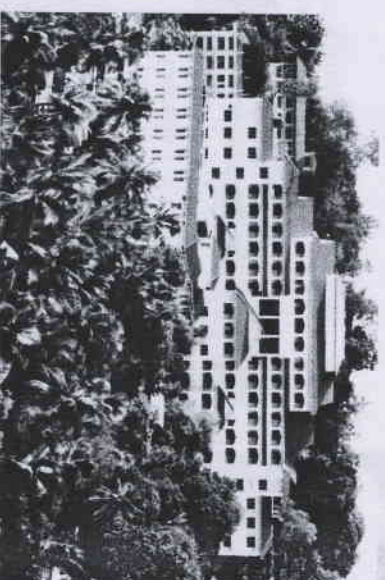
30<sup>th</sup> January – 2<sup>nd</sup> February, 2018

Venue: GEC Barton Hill



TPLC

GOVERNMENT ENGINEERING COLLEGE, BARTON HILL  
Trivandrum, India



Organized by

Translational research and Professional

Leadership Centre [TPLC]

GOVERNMENT ENGINEERING COLLEGE,  
BARTONHILL, THIRUVANANTHAPURAM